



Market Indicators

TOP GAINER	%	TOP LOSER	%
CIPLA	1.98	COALINDIA	(5.53)
SIEMENS	1.59	IDFC	(3.46)
CAIRN	1.40	TATAPOWER	(3.34)
HCLTECH	1.28	AMBUJACEM	(3.30)
HINDUNILVR	1.06	MARUTI	(3.25)

Broder Indices

Index	Closing Value	Change in (Pts)	Change (%)
MID CAP	6367.78	(18.35)	(0.29)
SMALL CAP	6137.85	(41.68)	(0.67)
IPO	1623.67	(17.18)	(1.05)

Sectoral Indices

AUTO	10472.49	(152.78)	(1.44)
BANKEX	13475.58	(90.41)	(0.67)
CD	7001.94	22.07	0.32
CG	9784.37	(3.51)	(0.04)
FMCG	5889.01	39.77	0.68
HC	8083.45	24.00	0.30
IT	6864.30	(36.54)	(0.53)
METAL	9045.62	(216.32)	(2.34)
OIL & GAS	8781.33	(106.98)	(1.20)
POWER	1753.46	(13.66)	(0.77)
PSU	6787.12	(113.15)	(1.64)
REALTY	2023.53	(24.84)	(1.21)
TECK	3929.53	(22.81)	(0.58)

Currency Movement

USDINR	54.29	0.13↑
EURINR	70.02	0.48↓
GBPINR	81.94	0.20↑
JPYINR	57.50	1.14↑

Market Breadth

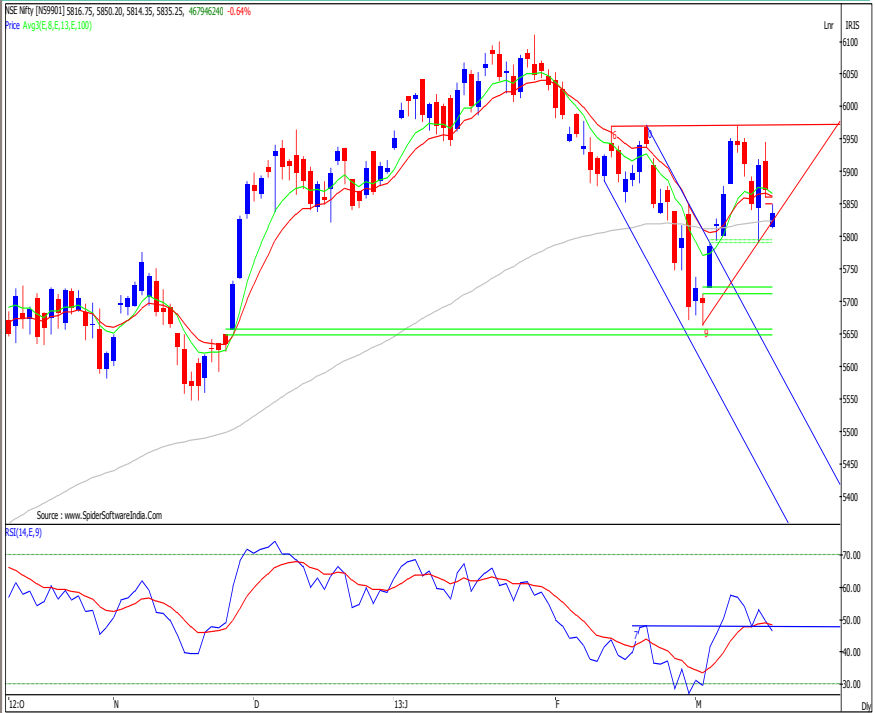
Exchange	Advances	Declines	Unchanged
BSE	1091	1757	121
NSE	503	985	87

MARKET STATISTICS

ACTION	FII (₹) Cr.	DII (₹) Cr.
CASH BUY	2697.35	615.21
CASH SELL	2191.35	1075.10
(Provisional)	+506.01	(459.89)

FII Derivatives	Buy (Cr.)	(Sell Cr.)	Net (Cr.)
Index Futures	1326.68	2025.98	(699.30)
Index Options	17041.92	17090.68	(48.77)
Stock Futures	1298.42	1319.13	(20.72)
Stock Options	1129.53	1154.20	(24.67)
Total			(793.46)

Exhibit 1: Daily Nifty Chart



NIFTY OUTLOOK

Yesterday the Nifty opened with bearish gap following with weak global cues and trade choppy in a narrow range of 30 points . The index held the opening lows and remained listless as participants preferred to stay on the sideline and wait for cues from the RBI 'a monetary policy. The Nifty closed at 5835.25 level with loss of 37.35 points.

- ◆ On daily chart the price action has formed s small body candles with gap of 12 points bearish gap above the its head between 5850 - 5872 levels.
- ◆ Since February 2013, the 5971 region has emerged as a bear's stronghold as the index has reverted sharply lower from the said area.
- ◆ Immediate resistances are placed between 5959 (66% retracement level of its fall from 6112 to 5663) & 5971 (20th February 2013 & 3rd March 2013 Highs). A decisive Daily Close above 5971 would complete an Inverse Head & Shoulders pattern. This would confirm continuation of the up-move since the low of 5663. Minimum target as per the pattern would be placed at 6278. Hence, the Nifty would then be expected to target 6300 levels.
- ◆ At last week's low (5791), the index took support precisely at the rising gap area formed on March 6, between 5784 and 5795. A sustained break and close below 5800 would put bullish efforts on the back foot and even challenge early March lows of 5663

For today trend deciding level for Nifty placed at 5833 if Nifty trade above this level then it may go up to 5872 - 5895 - 5915 level. However if Nifty trade below 5833 then it may find immediate support at 5818 level any violation of such support would signal further decline up to 5800 - 5780 level.

Indian Index Movement

MOVEMENT	SENSEX	NIFTY	SMA	SENSEX	NIFTY
OPEN	19282.63	5816.75	5 Days	19444	5876
HIGH	19345.42	5850.20	20 Days	19322	5842
LOW	19232.23	5814.35	48 Days	19596	5930
CLOSE	19293.20	5835.25	100 Days	19322	5862
CHANGE IN PTS	(134.26)	(37.35)	120 Days	19226	5834
CHANGE IN %	(0.69)	(0.64)	200 Days	18472	5603

*Source: BSE, NSE, BI, Capital Market & rbi.org.in



Symbol	PIVOT TABLE			Simple Moving Average				
	S2	S1	Pivot Point	R1	R2	5 Days	20 Days	55 Days
SENSEX	19177	19235	19290	19348	19403	19444	19322	19610
NIFTY	5797	2816	5833	5852	5869	5876	5842	5937
BANK NIFTY FUTURE	11600	11697	11779	11877	11959	11938	11974	12404
NIFTY FUTURE	5817	5834	5852	5869	5886	5899	5857	5955
NIFTY COMPONENTS								
ACC	1194	1210	1235	1251	1276	1254	1273	1317
AMBUJACEM	177	179	184	186	190	188	192	195
ASIANPAINT	4908	4955	4993	5040	5078	4890	4587	4494
AXISBANK	1283	1304	1320	1341	1358	1350	1385	1409
BAJAJ-AUTO	1768	1790	1826	1848	1885	1874	1957	2036
BANKBARODA	706	712	718	725	731	725	729	800
BHARTIARTL	297	302	306	312	316	313	314	327
BHEL	193	195	196	197	199	198	203	213
BPCL	385	389	392	396	399	395	389	395
CAIRN	287	292	295	300	303	296	301	318
CIPLA	376	384	388	396	400	386	380	396
COALINDIA	295	298	304	308	313	302	304	322
DLF	264	267	269	272	275	278	274	262
DRREDDY	1767	1785	1804	1822	1841	1814	1800	1864
GAIL	307	310	316	319	325	331	335	348
GRASIM	2890	2919	2954	2983	3018	2989	3007	3044
HCLTECH	778	790	798	810	817	788	749	700
HDFC	801	805	811	815	821	815	798	809
HDFCBANK	618	631	642	655	666	642	647	657
HEROMOTOCO	1660	1675	1685	1700	1710	1679	1680	1754
HINDALCO	92	94	95	96	98	96	101	114
HINDUNILVR	450	457	462	468	473	454	452	474
ICICIBANK	1027	1039	1048	1060	1068	1088	1093	1140
IDFC	149	150	153	155	158	155	155	164
INFY	2828	2845	2867	2884	2906	2879	2900	2762
ITC	299	301	303	306	308	302	296	295
JINDALSTEL	346	350	354	358	362	358	358	402
JPASSOCIAT	72	73	74	75	76	75	73	82
KOTAKBANK	642	648	657	663	672	659	661	659
LT	1460	1485	1503	1529	1547	1507	1446	1511
LUPIN	596	605	613	622	630	605	599	597
M&M	899	906	916	924	934	917	897	904
MARUTI	1332	1347	1370	1385	1408	1396	1424	1511
NTPC	143	145	145	147	147	147	149	153
ONGC	311	314	318	321	324	320	319	317
PNB	776	785	795	804	813	797	816	856
POWERGRID	108	109	109	109	109	109	109	111
RANBAXY	424	429	434	439	444	428	411	446
RELIANCE	824	829	836	842	849	846	841	862
RELINFRA	407	409	413	416	419	422	443	496
SBIN	2222	2236	2247	2262	2273	2231	2193	2336
SESAGOA	159	160	162	164	165	164	162	177
SIEMENS	554	569	579	593	603	557	537	604
SUNPHARMA	820	826	834	840	848	832	812	765
TATAMOTORS	282	285	287	290	292	297	297	305
TATAPOWER	96	97	99	100	102	99	98	102
TATASTEEL	344	346	349	352	355	354	356	389
TCS	1546	1556	1565	1576	1584	1563	1522	1408
ULTRACEMCO	1874	1889	1913	1928	1952	1909	1906	1924
WIPRO	427	430	436	439	444	438	428	414



Economic Calendar

Importance	IST	Location	Indicator	Unit	Forecast	Previous	Actual
Low	19-21	China	Foreign Direct Investment ytd/y	%		-7.3	
Low	14:30	Euro Zone	Italian Industrial Production (M o M)	%	-0.3	0.4	
High	15:00	Britain	CPI (Y o Y)	%	2.8	2.7	
High	15:00	Britain	PPI Input (M o M)	%	1.6	1.3	
Medium	15:00	Britain	RPI (Y o Y)	%	3.3	3.3	
Low	15:00	Britain	Core CPI (Y o Y)	%	2.2	2.3	
Low	15:00	Britain	HPI (Y o Y)	%	2.6	3.3	
Low	15:00	Britain	PPI Output (M o M)	%	0.3	0.2	
High	15:30	Euro Zone	German ZEW Economic Sentiment		47.9	48.2	
Medium	15:30	Euro Zone	ZEW Economic Sentiment		43.7	42.4	
High	Tentative	Britain	BOE Inflation Letter				
High	18:00	USA	Building Permits	M	0.93	0.9	
Medium	18:00	USA	Housing Starts	M	0.92	0.89	



DISCLAIMER: This document is not for public distribution and has been furnished to you solely for your information and must not be reproduced or redistributed to any other person. Persons into whose possession this document may come are required to observe these restrictions.

The information and views in this report, our website & all the service we provide are believed to be reliable, but we do not accept any responsibility (or liability) for errors of fact or opinion. Users have the right to choose the products that suits them the most. Investment in Stocks has its own risks. Sincere efforts have been made to present the right investment perspective. The information contained herein is based on analysis and up on sources that we consider reliable. We, however, do not vouch for the accuracy or the completeness thereof. This material is for personal information and we are not responsible for any loss Incurred based upon it & take no responsibility whatsoever for any financial profits or loss which may arise from the recommendations above.

Recipients of this material should rely on their own investigations and take their own professional advice. Each recipient of this document should make such investigations as it deems necessary to arrive at an independent evaluation of an investment in the securities of companies referred to in this document including the merits and risks involved), and should consult their own advisors to determine the merits and risks of such an investment. Price and value of the investments referred to in this material may go up or down. Past performance is not a guide for future performance. Certain transactions - futures, options and other derivatives as well as non-investment grade securities - involve substantial risks and are not suitable for all investors. Reports based on technical analysis centers on studying charts of a stock's price movement and trading volume, as opposed to focusing on a company's fundamentals and as such, may not match with a report on a company's fundamentals.
All the Rights are reserved.

Contact Us: research@urjatrade.com

Web: www.LAAVLE.com

Registration: NSE - CASH INB230696132 | NSE - FO INF230696132 | BSE - CASH INB010696137

URJA INVESTMENT PTE. LTD.

Private & Confidential